



**New burn Team Manager | Manu Palacios**

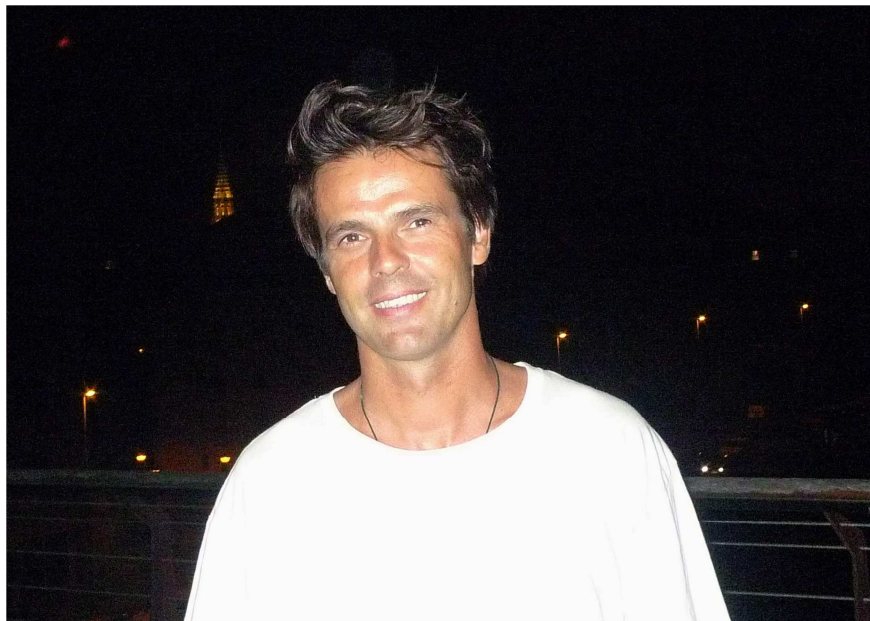
For immediate release | 6 November 2012

**burn ANNOUNCES MANUEL 'MANU' PALACIOS AS THE NEW TEAM MANAGER**

With over 10 years of experience within the snowboard and skateboard industry working in the realms of Marketing, Manu joins the burn family as Team Manager.

Having managed teams, coordinated marketing initiatives as well as starting up his own skateboard deck brand, Manu will now be managing the international snowboard and skateboard team of Gigi Rűf, Mathieu Crepel, Ståle Sandbech, Ulrik Badertscher, Arthur Longo, Werni Stock, Ignacio Morata and Rune Glibberg as well as contributing to the development of the burn brand.

**WELCOME TO THE burn FAMILY MANU.**



---

**About burn**

burn energy drink provides the fuel and the energy to those who want to leave their creative mark on the world. The burn skateboard and snowboard project aims to build the foundations for fresh creativity and new concepts within the skate community. The program is here to support new ideas, reward passion and nurture skateboarders and snowboarders of this mindset.



[www.burn.com](http://www.burn.com)  
[www.facebook.com/burn](http://www.facebook.com/burn)